

# GLLUSA

75 Marine Street, Farmingdale, NY 11735  
 516-280-2854 / Service@GLLUSA.com  
 www.GLLUSA.com

<b>Project:</b>	
<b>Date:</b>	
<b>Note:</b>	

## SIMPLY RELIABLE

### LED WALL PACKS TR61 SERIES



### DESCRIPTION

The TR61 Wall Packs brighten up building exteriors, parking garages, and landscapes. Replacing inefficient 175 to 400watt metal halides, this LED wall pack emits a similarly bright light with even light distribution that customers are accustomed to.

### APPLICATIONS

- Full sized to replace traditional wall packs
- PC lens for challenging weather conditions
- Sensors and accessories available
- IP65 Rated

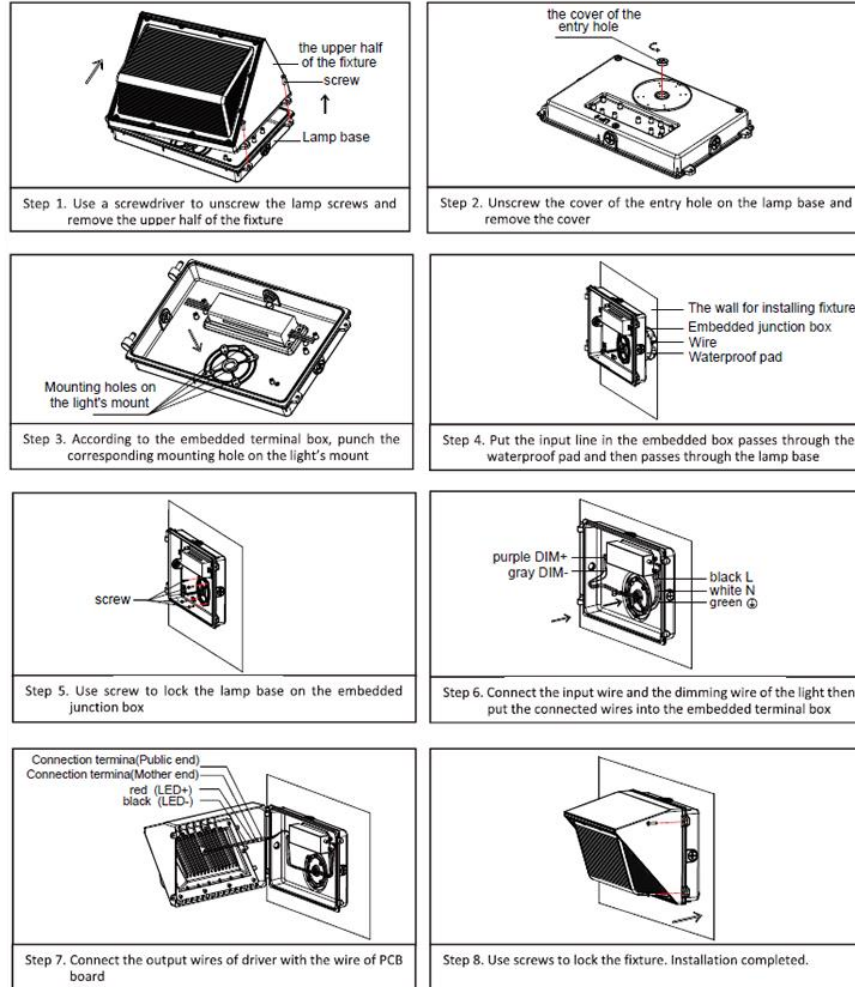


SPECIFICATIONS		TR61-40W-40K-NV-P-H	TR61-40W-50K-NV-P-H	TR61-40W-57K-NV-P-H
<b>ORDERING</b>	Brand	Builders Pack	Builders Pack	Builders Pack
	SKU	57-63002-40	57-63002-50	57-63002-57
<b>GENERAL PERFORMANCE</b>	Power Consumption	40W	40W	40W
	Color Temp. (CCT)	4000K	5000K	5700K
	Lumens Delivered (lm)	5536.8 lm	5686 lm	5761 lm
	Efficacy (lm/W)	140.24 lm/W	143.69 lm/W	145.3 lm/W
	CRI	≥80		
	L70/L90 Lifetime (Hours)	50,000 / 36,000 Hours		
<b>ELECTRICAL</b>	Equivalency	120-160W MH		
	Power Factor	≥0.9		
	Input Voltage	AC 120-277V		
<b>PHYSICAL</b>	Dimming	1-10V		
	Mounting	Wall Mounted		
	Operating Temp.	-22°F ~+ 140°F		
	Storage Temp.	-40°F ~+ 185°F		
<b>QUALIFICATION</b>	Ingress Protection (IP)	IP65		
	Certifications	UL: E491816   DLC   RoHS   FCC   CE		
	Material Usage	Die-casting Aluminum		
	Environment	Outdoor		
<b>DIMENSIONS</b>	Warranty	5 years		
	Product Size	14.4" x 9.1" x 8.66"		
	Gross Weight	7.21 lbs		

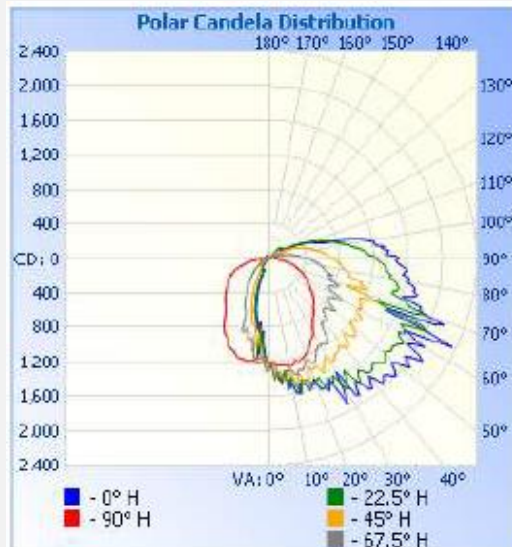
<b>Project:</b>	
<b>Date:</b>	
<b>Note:</b>	

### WALL MOUNT INSTALLATION

#### INSTALLATION DIAGRAM



#### DISTRIBUTION CURVE



# GLLUSA

75 Marine Street, Farmingdale, NY 11735  
 516-280-2854 / Service@GLLUSA.com  
 www.GLLUSA.com

Project:	
Date:	
Note:	

## SIMPLY RELIABLE

<b>DISTANCE CURVE</b>	<p><b>Illuminance at a Distance</b></p> <table border="1"> <thead> <tr> <th>Center Beam fc</th> <th>Beam Width</th> <th></th> </tr> </thead> <tbody> <tr> <td>111.4 fc</td> <td>8.3 ft</td> <td>5.9 ft</td> </tr> <tr> <td>27.8 fc</td> <td>16.7 ft</td> <td>11.8 ft</td> </tr> <tr> <td>12.4 fc</td> <td>25.0 ft</td> <td>17.8 ft</td> </tr> <tr> <td>7.0 fc</td> <td>33.4 ft</td> <td>23.7 ft</td> </tr> <tr> <td>4.5 fc</td> <td>41.7 ft</td> <td>29.6 ft</td> </tr> <tr> <td>3.1 fc</td> <td>50.1 ft</td> <td>35.5 ft</td> </tr> </tbody> </table> <p> <span style="color: blue;">■</span> Vert. Spread: 103.3°  <span style="color: red;">■</span> Hcriz. Spread: 83.8°                 </p>		Center Beam fc	Beam Width		111.4 fc	8.3 ft	5.9 ft	27.8 fc	16.7 ft	11.8 ft	12.4 fc	25.0 ft	17.8 ft	7.0 fc	33.4 ft	23.7 ft	4.5 fc	41.7 ft	29.6 ft	3.1 fc	50.1 ft	35.5 ft
	Center Beam fc	Beam Width																					
111.4 fc	8.3 ft	5.9 ft																					
27.8 fc	16.7 ft	11.8 ft																					
12.4 fc	25.0 ft	17.8 ft																					
7.0 fc	33.4 ft	23.7 ft																					
4.5 fc	41.7 ft	29.6 ft																					
3.1 fc	50.1 ft	35.5 ft																					
<b>SHIPPING</b>	Pcs / Carton	1pcs																					
	Master Carton Size	15.35" x 10.63" x 10.83"																					
	Pcs / Pallet	94pcs																					
	Pcs / 20' GP	920pcs (No Pallet)   850pcs (Palletized)																					
	Pcs / 40' GP	1850pcs (No Pallet)   1750pcs (Palletized)																					
	Pcs / 40' HQ	2300pcs (No Pallet)   2080pcs (Palletized)																					
	Pcs / 45' HQ	2525pcs (No Pallet)   2420pcs (Palletized)																					

\*Package specifications are subject to change without notice.

LAMP CODE DEFINITIONS					
Internal Use	Wattage	CCT	Voltage	Material	Other
TR61	40W	40K = 4000K 50K = 5000K 57K = 5700K	NV = 120-277V	P = PC	H = Light Effect

ACCESSORIES		
SKU	Description	Image
ES63081	Photocell Daylight Sensor	
57-63031-A	DARK SKY SHIELD	
57-63032-A	Barbed Wire Guard	